

VINCI IS ERECTING THE ORIGINE BUILDING COMPLEX IN NANTERRE (WESTERN SUBURBS OF PARIS)



70,000 m²
of office space



10,000 m²
of housing



4 certifications
and **2 environmental**
labels

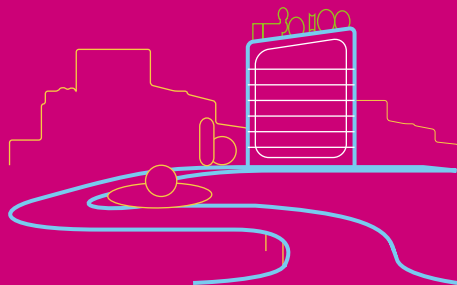
2,800
solar
panels
for lighting

3 buildings
of 9 and 10 storeys

Near the new
**Nanterre-
La Folie**
station
(Line E of the RER and
Line 15 of the Grand Paris
Express system)

Geothermal
boreholes
for heating

Objective:

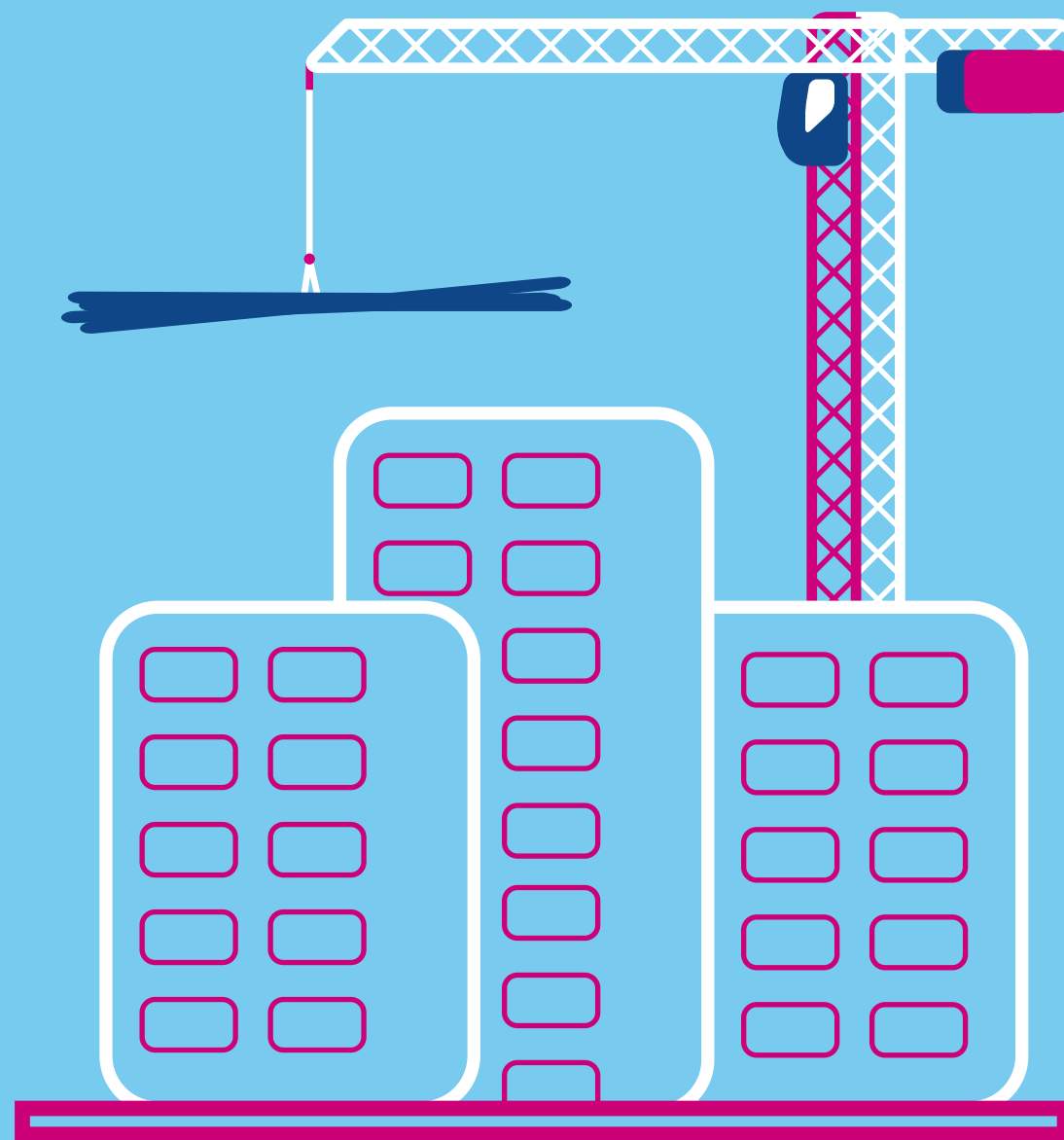


Contributing to the
development
of Nanterre's Quartiers
des Terrasses et des Groues.

**VINCI IS AIMING VERY HIGH
ENVIRONMENTAL
PERFORMANCE
WITH THE ORIGINE
BUILDING COMPLEX
IN NANTERRE**

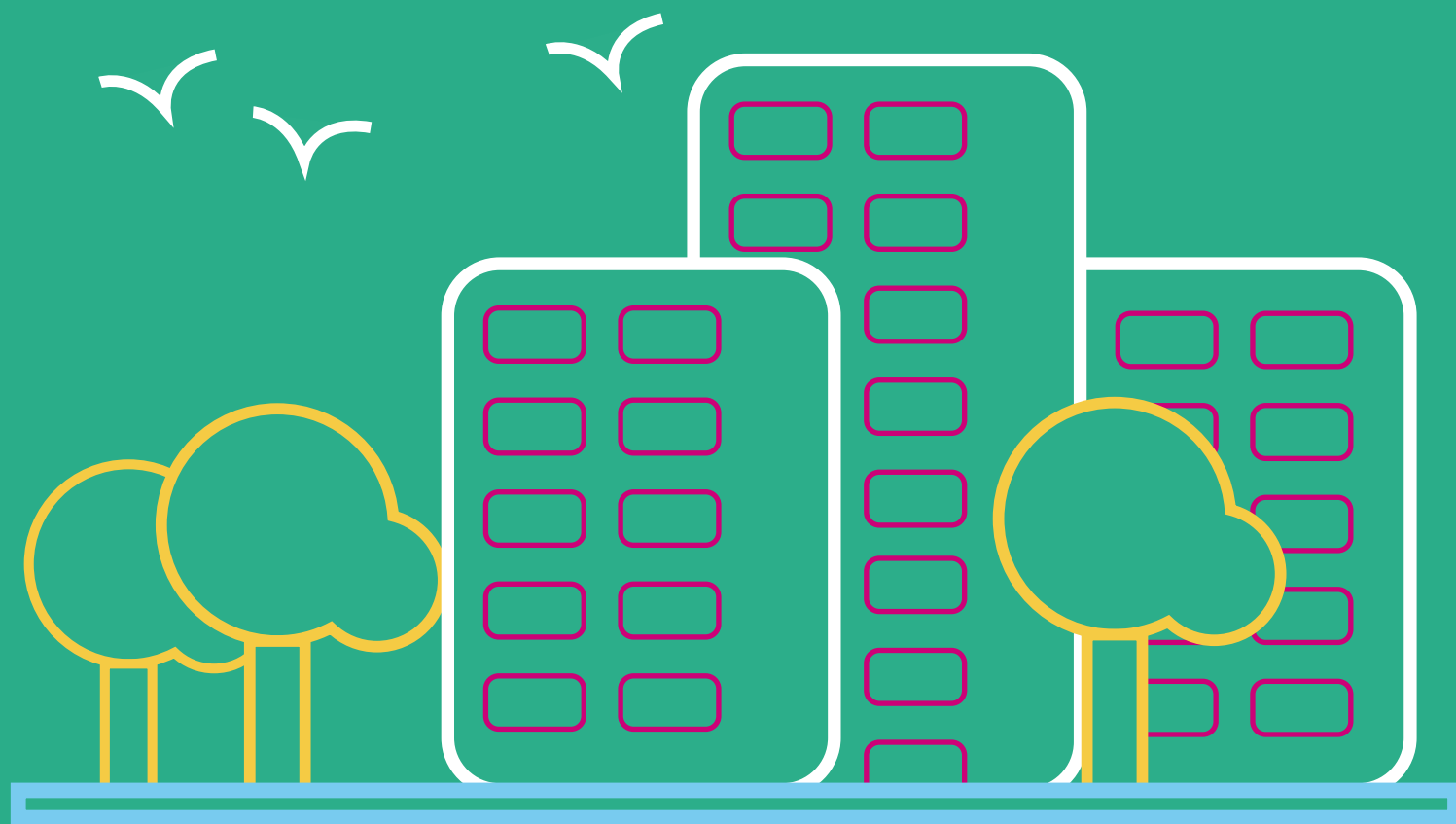


VINCI IS ERECTING THE ORIGINE BUILDING COMPLEX IN NANTERRE



AN 80,000 M²

MIXED-USE DEVELOPMENT TO HIGH ENVIRONMENTAL PERFORMANCE STANDARDS



TO DEVELOP
NANTERRE'S QUARTIERS
DES TERRASSES
AND DES GROUES,



WHICH ARE
DESTINED **TO BECOME**
THE LINKS BETWEEN THE CITY
AND THE LA DÉFENSE BUSINESS
DISTRICT

